



# Clinical Supervision for Mental Health Nurses

## Mental health nurse leaders working together to achieve a shared vision

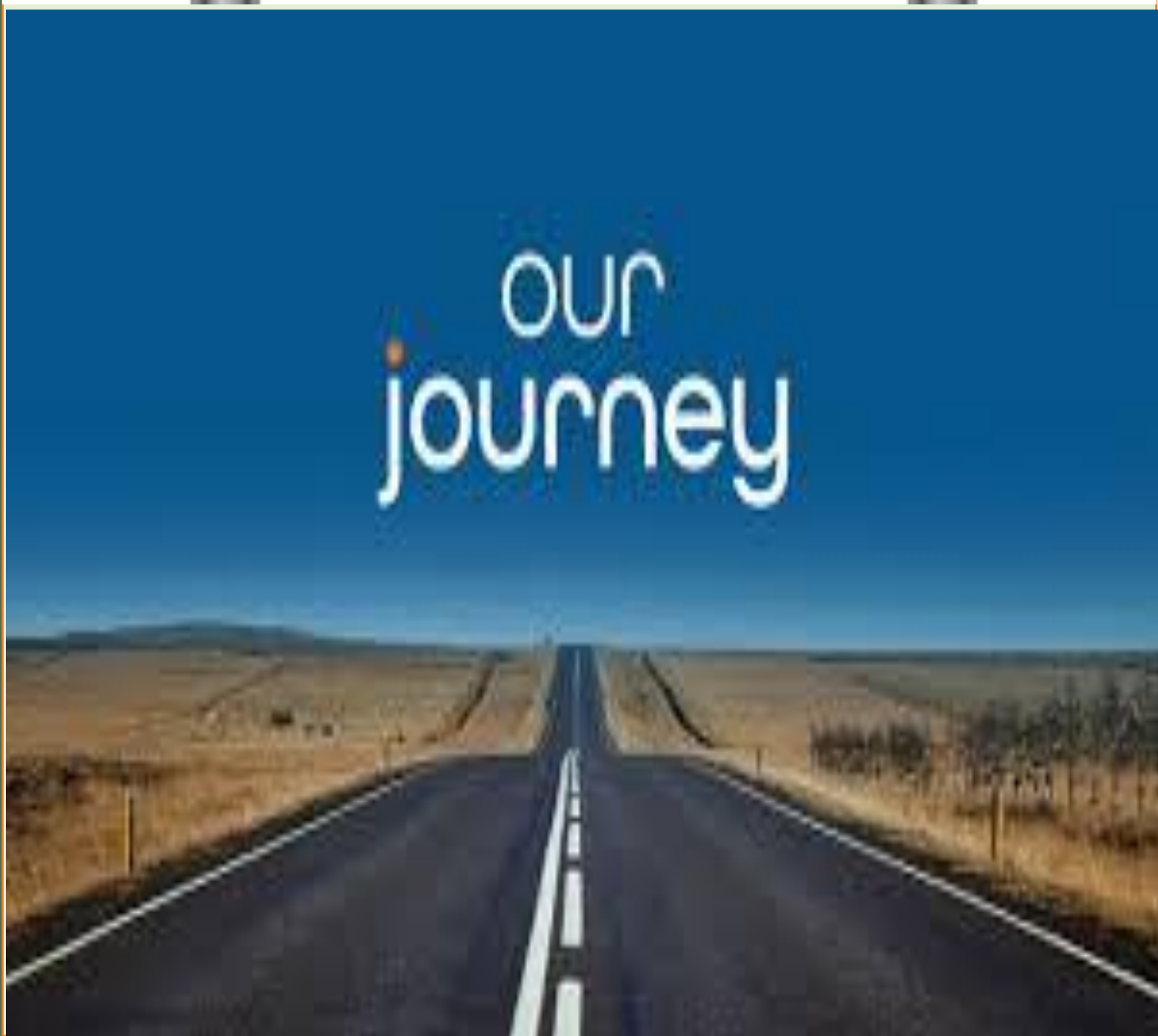
C. Flanagan (NPDC), R. Finlay (CNM3), C. Twomey (NMPDU Officer), E. Collins (ADON), D. Heneghan (ADON), R. Murray (ADON), S. Rusike (CNS), S. Hayden (DON), C. Walsh (Area DON)



- ☐ Improves patient care by promoting high standards of safe practice.
- ☐ Supports professional development and increases adherence with PPPG.
- ☐ Provides support to help with emotional impact of clinical practice as mental health nurses are in direct contact with service users in a wide range of complex healthcare settings.
- ☐ Increases job satisfaction, staff retention and reduces burn out.
- ☐ Allows nurses space to reflect on their practice.
- ☐ Promotes a recovery approach in clinical practice.



- ☐ Support the implementation of Clinical Supervision for nurses in Dublin South East (DSE) and Wicklow Mental Health Service.
- ☐ Build an understanding of Clinical Supervision among our nursing colleagues.
- ☐ Promote the availability of Clinical Supervision as a resource for professional and personal development and accountability.
- ☐ Have sustainable structures in place to make Clinical Supervision available for all nursing colleagues in the next 3 to 5 yrs.



- ☐ Wicklow nurse leadership team, supported by NMPDU DSKW, provided Clinical Supervision education programme to 19 RPNs in 2021.
- ☐ Clinical Supervision Steering group established June 2024 to support implementation of Clinical Supervision for mental health nurses in HSE CHEast with sustainability at the heart of this initiative.
- ☐ Service Innovation and Improvement funding secured from NMPDU DSKW to provide Clinical Supervision to 10 RPNs in 2024.
- ☐ Online education module developed with support of Regional Nurse Education Co-ordinator.



- ☐ Committed steering group members with a shared vision of the future.
- ☐ Management support and commitment.
- ☐ Collaborative approach that facilitated open discussion and sharing of learning from other services.
- ☐ HSE (2019) National Policy and guidance documents including process for implementation of Clinical Supervision for nurses working in mental health services.
- ☐ All decision making is informed by the best available evidence.



- ☐ Difficulty accessing education programme for supervisors may impact sustainability.
- ☐ Competing priorities leading to reduced uptake of clinical supervision.
- ☐ Lack of experienced supervisors

References  
HSE (2019) National Policy for Clinical Supervision in Psychiatric/Mental Health Nursing. <https://healthservice.hse.ie/filelibrary/national-policy-for-clinical-supervision-in-psychiatric-mental-health-nursing-2019.pdf>  
HSE/ONMSD (2012) A Vision for Psychiatric/Mental Health Nursing A shared journey for mental health care in Ireland.  
O'Shea, J., Kavanagh, C., Roche, L., Roberts, L. and Connaire, S. (2019) Clinical supervision for nurses working in mental health services: A guide for nurse managers, supervisors and supervisees.  
McDonough JH, Rhodes K, Procter N. (2024) Impact of clinical supervision on the mental health nursing workforce: a scoping review protocol. BMJ Open 2024;1.